

Drop Impact Tester

IST series

The Drop impact tester IST series can carry out impact test via free fall impactor. The Mass of the impactor is changeable by the addition of weights, equipped with a braking system for anti-rebound of the impactor, repeatable test can also be conducted fully automatically with easy operation.

This tester applies impact test for automotive parts and evaluation of cushioning material, etc.

Features

- Impactor with free-fall style which mass is interchangeable between 2.3 to 40kg.
- Maximum drop height is 1200mm
- Full-automatic test with easy operation
- Brake function of impactor equipped

Application

- Impact test for automotive parts (harness, gasoline hose, connector etc.)
- Shock evaluation of cushioning materials

Specification.※

Model	IST-200
Sample size (mm)	200 × 200 max.
Sample thickness (mm)	398 max.
Impactor weight (kg)	Light type : 2.5~10.0 / Heavy type : 5.0~40.0
Drop height (mm)	1200 max.
Drop mechanism	Electric release hook
Anti-rebound system	Air cylinder type
Size (mm)	W565 × D740 × H2400
Weight (kg)	480
Controller size (mm)	W530 × D400 × H925
Power supply	AC200V、3 phases、5A
Air supply	0.6MPa
Option	Velocity sensor, Accelerometer, Displacement sensor, Safety equipment

※Available for customization



Drop Impact Tester

IST series



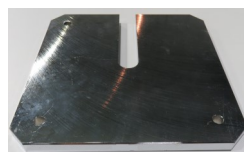
Tester body

Lift of impactor

Impactor is lifted to a test drop height automatically.

Impactor

Impactor is dropped by free-fall and strike the test sample. Weight of impactor can be changed by additional mass till up to 40kg. Optional accelerometer can be installed on the basement of the impactor.



Additional mass

Velocity sensor (option)

Velocity sensor can capture the impact velocity of the impactor when it impacts the test specimen.

Space for test sample

Test sample is installed on this space. Maximum size of sample is 200×200mm.

Test operation panel

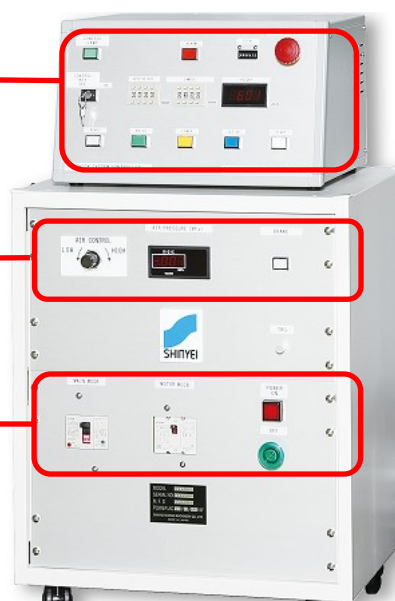
Drop height, test cycle and test start, etc. can be operate on this panel.

Brake setting part

Operation of brake system on or off

Power button

Main power switch and earth leakage breaker



Controller

 **SHINYEI** www.shinyei-tm.com

SHINYEI TECHNOLOGY CO., LTD.

Tsukuba Office B47-11, Katoridai, Tsukuba, Ibaraki, 300-2657, JAPAN

Tel: +81-29-848-3571 FAX: +81-29-848-3572

International Sales Office

Shinyei BLDG. 5F, 77-1 Kyomachi, Chuo-ku, Kobe 651-0178, JAPAN

Tel: +81-78-392-6903 FAX: +81-78-332-1619

Specifications and information listed in this catalog are subject to change without notice.

December 2018